

CT 2000

2000 GALLONS/9092 LITRES
ROUND WATER TANK

	QLD Dalby	NSW Bathurst	VIC Moama
DIAMETER	2370	2340	2300
APEX HEIGHT	2410	2390	2445
INLET HEIGHT	2170	2250	2250

Features

- Premium quality, UV protected and designed to withstand harsh Australian weather
- Manufactured from 100% food grade polyethylene (no BPA)
- Fully self supporting roof and extra ribs for superior strength
- Tapered walls and one-piece construction
- Delivery included

PEOPLE REQUIRED ONSITE TO ASSIST WITH DELIVERY ③	1 + 1 DRIVER
WEIGHT	200 KG

Free Inclusions①

(Fitted onsite upon delivery)

400mm Strainer



1" Watermarked Tested Brass Ball Valve ②

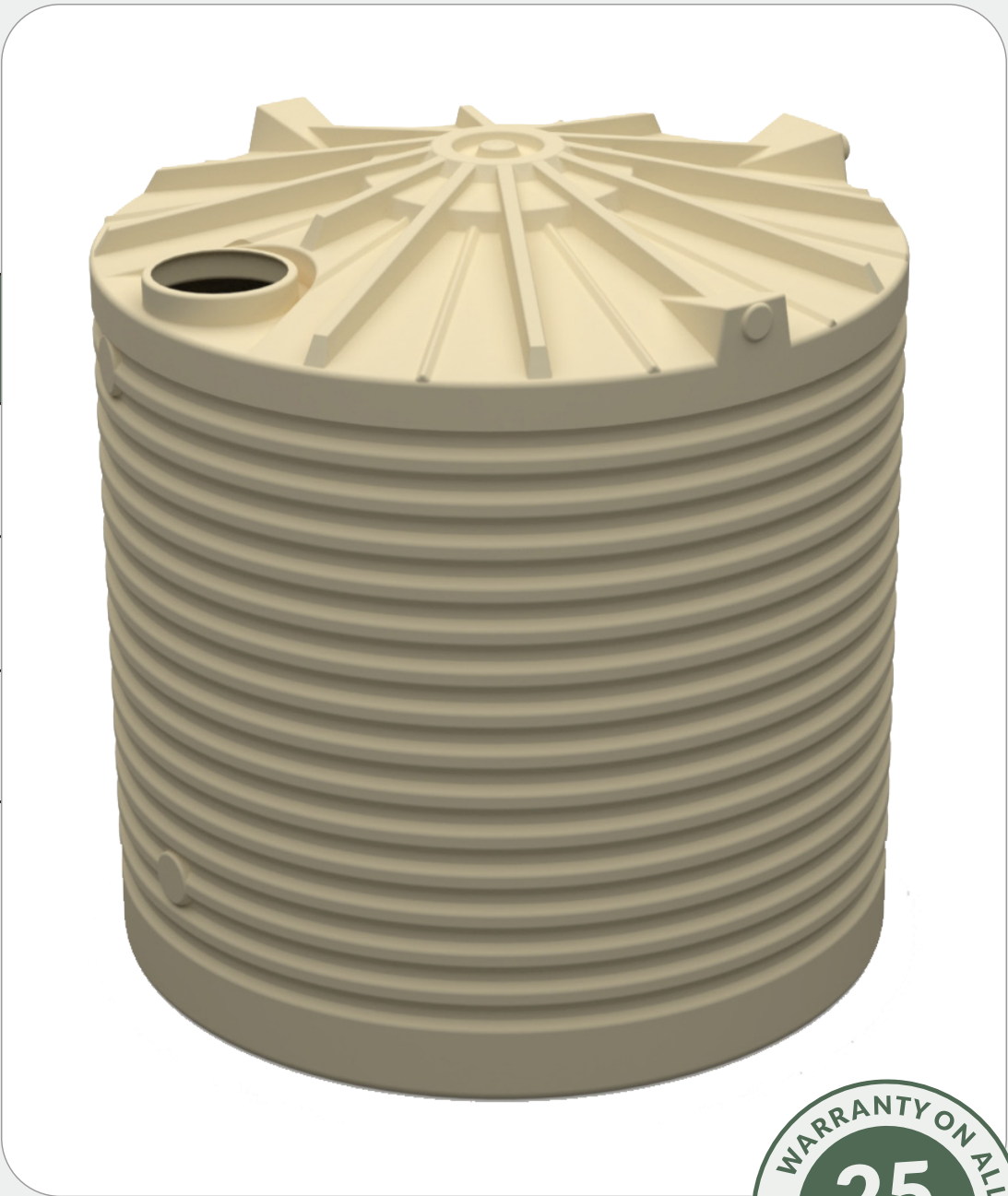


1" Watermarked Tested Brass Outlet ②



90mm Overflow Strainer







Australian Made & Operated



AS/NZS 4766:2020
Certification #7662-2834-02



ISO 9001:2015
Certification #5703-3065-02



Manufactured from
100% Food Grade
Polyethylene

① Additional watermarked tested brass fittings or poly fittings are available on request (additional charges may apply)

② Watermarked tested brass fittings available in 1", 1.5" & 2", poly welded fittings also available (additional charges may apply)

③ Delivery & installation guide available, enquire for a copy

* Warranty Conditions available on our website

Sizes shown are approximate sizes. Capacities listed are approximate maximum volumes. Prices quoted include GST. Specifications are subject to change. Product Certification applies to selected range.

