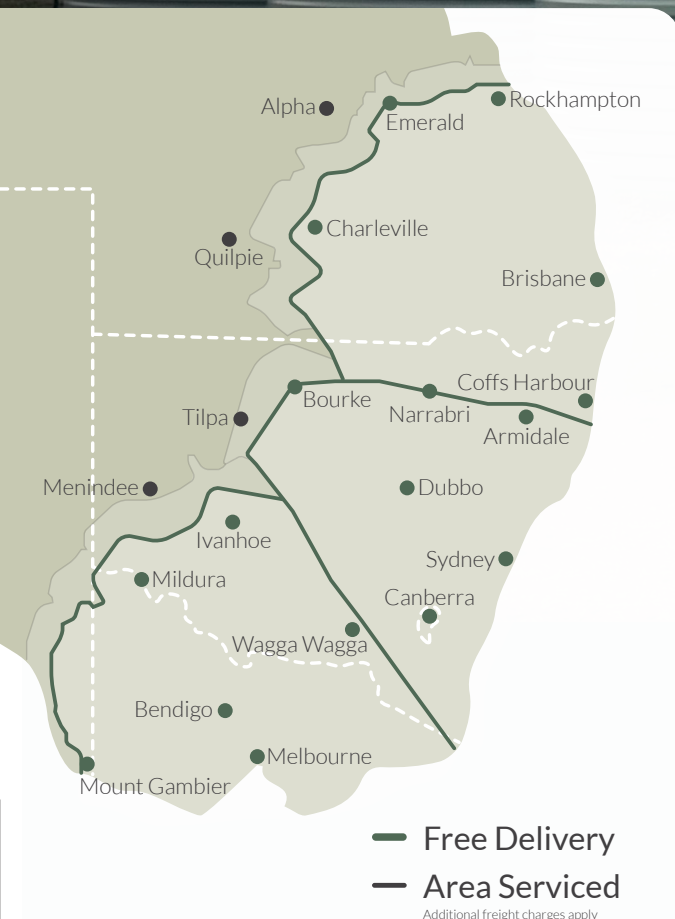


CLARK TANKS

Better Design. Better Build. Better Value.

Strong,
affordable,
heavy duty,
premium,
UV-protected
**rainwater
tanks**



- ✓ Aussie Made & Operated
- ✓ ISO certified, BASIX certified
- ✓ Certified to Australian Standards
- ✓ Quality Endorsed

1800 887 979

18304 Warrego Hwy, Dalby QLD

  clarktanks.com.au



32 Standard Colours



UV20 Protection

Benefits of a Clark Tank

- ✓ Manufactured from high quality food grade UV stabilised polyethylene (No BPA).
- ✓ Will not change the taste or quality of your water.
- ✓ Polyethylene tanks do not rust or corrode.
- ✓ Can be linked together for even greater storage capacity.
- ✓ Superior design with tapered walls (above 5,000 litre).
- ✓ Once piece construction, No vertical side seams (apart from our slimline range).
- ✓ Proven history of long term use in the most demanding rural and urban applications.
- ✓ Come with quality Watermarked Fittings as standard (see reverse).

Clark Tanks is one of very few Australian tank manufacturers that are certified to both the Australian Tank Standards.



AS/NZS 4766:2006
Polyethylene Storage Tanks
for Water and Chemicals
Certification # 300/1



Independently Certified By



Made & Operated
in Australia

**DELIVERY
INCLUDED
UP TO 600KM
FROM DALBY**

Sizes shown are approximate sizes. Capacities listed are approximate maximum volumes. Prices quoted include GST. Specifications are subject to change. *Conditions apply. * Product Certification applies to selected range.

White

Merino

Beige

Earthtone

Inlet
Beige

Ravine

Autumn
Brown

Bronze
Olive

Heritage
Green

Tidal
Green

Rivergum

Mist
Green

Smooth
Cream

CT225 | 1,000 Litre

Apex Height: 1680mm



Inlet Height: 1680mm

Diameter at Base: 965mm

Price: \$

CT440 | 2,000 Litre

Apex Height: 2000mm



Inlet Height: 2000mm

Diameter at Base: 1200mm

Price: \$

CT2000 | 9,092 Litre

Apex Height: 2390mm



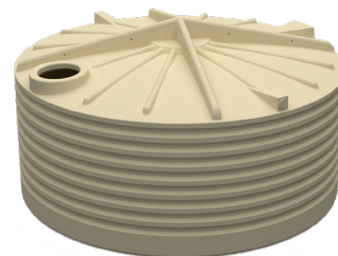
Inlet Height: 2250mm

Diameter at Base: 2340mm

Price: \$

CT2100SQ | 9,546 Litre

Apex Height: 1580mm



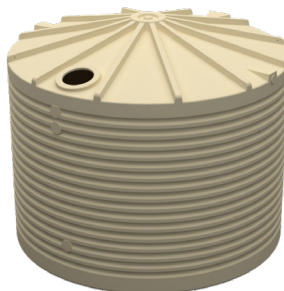
Inlet Height: 1330mm

Diameter at Base: 3090mm

Price: \$

CT5000DNR | 22,730 Litre

Apex Height: 2900mm



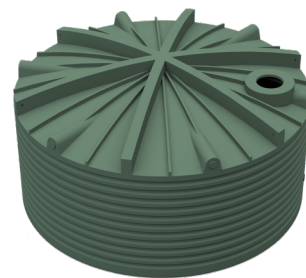
Inlet Height: 2480mm

Diameter at Base: 3500mm

Price: \$

CT5200SQ | 23,639 Litre

Apex Height: 2214mm



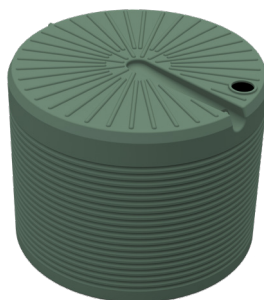
Inlet Height: 2000mm

Diameter at Base: 4150mm

Price: \$

CT11000 | 50,050 Litre

Apex Height: 3390mm



Inlet Height: 3390mm

Diameter at Base: 4365mm

Price: \$



Wheat	Desert Haze	Terrane	Heritage Red	Aubergine	Mountain Blue	Stormedge Blue	Torris Blue	Birch Grey	Dusk	Light Grey	Slate Grey	Boulder Grey	Metal Grey	Charcoal	Black	Native Grey	Gull Grey	Wind Grey
-------	-------------	---------	--------------	-----------	---------------	----------------	-------------	------------	------	------------	------------	--------------	------------	----------	-------	-------------	-----------	-----------

CT660 | 3,000 Litre



Apex Height: 2095mm

Inlet Height: 2095mm

Diameter at Base: 1450mm

Price: \$

CT1100 | 5,000 Litre



Apex Height: 2200mm

Inlet Height: 2050mm

Diameter at Base: 1840mm

Price: \$

CT1100SQ | 5,000 Litre



Apex Height: 1750mm

Inlet Height: 1630mm

Diameter at Base: 2120mm

Price: \$

CT2200 | 10,000 Litre



Apex Height: 2150mm

Inlet Height: 1960mm

Diameter at Base: 2600mm

Price: \$

CT3300 | 15,000 Litre



Apex Height: 2450mm

Inlet Height: 2260mm

Diameter at Base: 2935mm

Price: \$

CT5000 | 22,730 Litre



Apex Height: 2780mm

Inlet Height: 2460mm

Diameter at Base: 3530mm

Price: \$

CT5500 | 25,000 Litre



Apex Height: 2590mm

Inlet Height: 2510mm

Diameter at Base: 3690mm

Price: \$

CT7000 | 31,822 Litre



Apex Height: 2980mm

Inlet Height: 2750mm

Diameter at Base: 4150mm

Price: \$

CT8800 | 40,000 Litre



Apex Height: 2950mm

Inlet Height: 2798mm

Diameter at Base: 4570mm

Price: \$

WARRANTY ON ALL SLIMLINE TANKS*

10 YEAR

Slimline Tanks

SL2000 | 2,000 Litre



Height: 1685mm

Width: 680mm

Length: 2180mm

Price: \$

SL3000 | 3,000 Litre



Height: 2000mm

Width: 780mm

Length: 2500mm

Price: \$

SL5000 | 5,000 Litre



Height: 2120mm

Width: 1080mm

Length: 2990mm

Price: \$

PRJ55 Pressure Pump

Number of taps: 2-4



Max Flow Pressure: 60L/min

Price: \$

PRJ65 Pressure Pump

Number of taps: 4-6



Max Flow Pressure: 70L/min

Price: \$

PRJ80 Pressure Pump

Number of taps: 5-8



Max Flow Pressure: 78L/min

Price: \$

PRJ100 Pressure Pump

Number of taps: 7-12



Max Flow Pressure: 80L/min

Price: \$

VSRE67-120 Drive Pump with Pump Cover

Number of taps: 6-10



Max Flow Pressure: 120L/min

Price: \$

RainPro RM5096-7 Submersible Pump

WARRANTY ON
2
YEAR
WATERPRO PUMPS

Number of taps: 4-6



Rains to Mains Valve

Max Flow Pressure: 72L/min

Price: \$

WaterPro DJ58-2 Pressure Pump

WARRANTY ON
2
YEAR
WATERPRO PUMPS

Number of taps: 2-4



Max Flow Pressure: 55L/min

Price: \$

Floatless Rain to Mains Valve

Full flow 25mm/1" outlets



Price: \$

Included with all tanks

Price includes standard fittings - upgrade fees do apply



Watermarked
Brass Ball Valve

Available in



Watermarked
Brass Tank Fitting

1" 1.5" 2"



Inlet Strainer
400mm



Overflow Strainer
90mm