

SL 3000

660 GALLONS/3000 LITRES
SLIMLINE TANK

	QLD Dalby	NSW Bathurst	VIC Moama
LENGTH	2570	2570	2500
WIDTH	780	795	785
HEIGHT	2000	1990	2000

Features


- Premium quality, UV protected and designed to withstand harsh Australian weather
- Manufactured from 100% food grade polyethylene (no BPA)
- Fully self supporting roof
- One-piece construction
- Delivery included

PEOPLE REQUIRED ONSITE TO ASSIST WITH DELIVERY ③	2 + 1 DRIVER
WEIGHT	113 KG


Free Inclusions①

(Fitted onsite upon delivery)


400mm Strainer




1" Watermarked Tested Brass Ball Valve ②

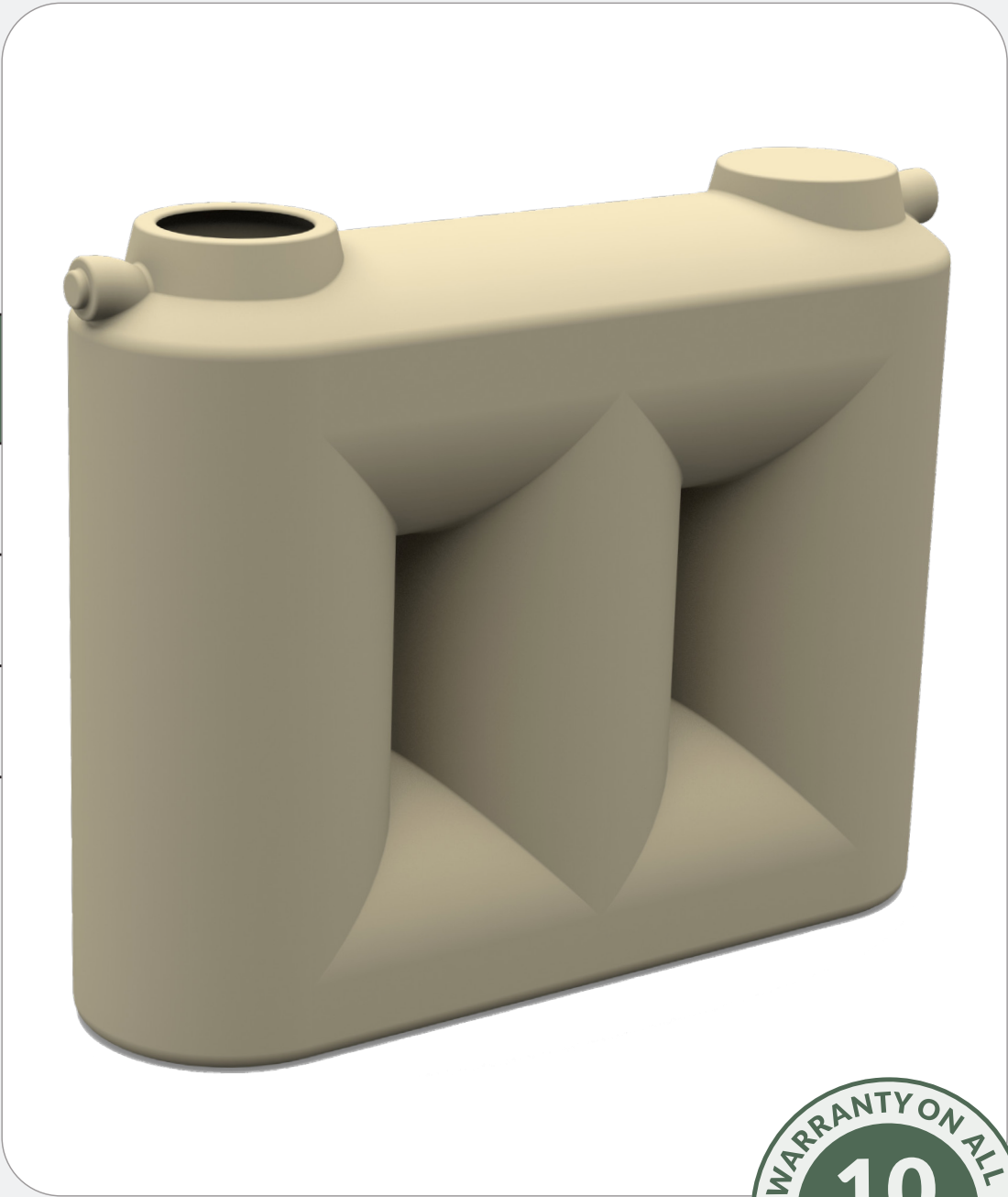


1" Watermarked Tested Brass Outlet ②



90mm Overflow Strainer







Australian
Operated & Built



AS/NZS 4766:2006
Polyethylene Storage Tanks
for Water and Chemicals
Certification # 300/1



COMPASS ASSURANCE SERVICES
• ISO 9001 •



Manufactured from
100% Food Grade
Polyethylene

① Additional watermarked tested brass fittings or poly fittings are available on request (additional charges may apply)

② Watermarked tested brass fittings available in 1", 1.5" & 2", poly welded fittings also available (additional charges may apply)

③ Delivery & installation guide available, enquire for a copy

* Warranty Conditions available on our website

Sizes shown are approximate sizes. Capacities listed are approximate maximum volumes. Prices quoted include GST. Specifications are subject to change. Product Certification applies to selected range.

