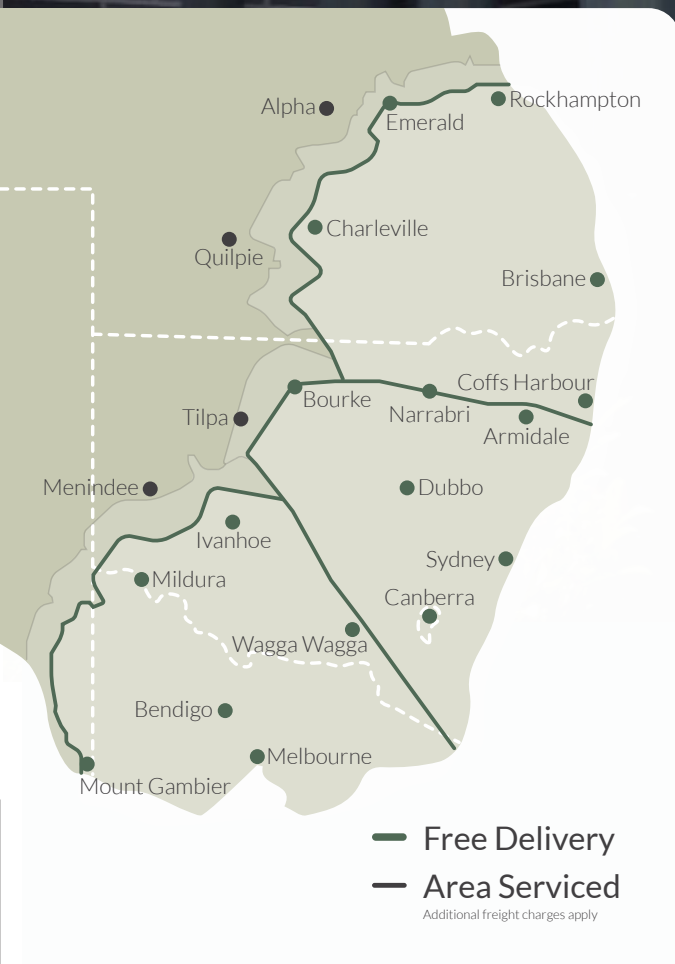


CLARK TANKS

Better Design. Better Build. Better Value.

Strong,
affordable,
heavy duty,
premium,
UV-protected
**rainwater
tanks**



- ✓ Aussie Made & Owned
- ✓ ISO certified, BASIX certified
- ✓ Certified to Australian Standards
- ✓ Quality Endorsed

1800 887 979

4 Wembley Place, Kelso NSW

  clarktanks.com.au

Benefits of a Clark Tank

- ✓ Manufactured from high quality food grade UV stabilised polyethylene (No BPA).
- ✓ Will not change the taste or quality of your water.
- ✓ Polyethylene tanks do not rust or corrode.
- ✓ Can be linked together for even greater storage capacity.
- ✓ Superior design with tapered walls (above 5,000 litre).
- ✓ Once piece construction, No vertical side seams (apart from our slimline range).
- ✓ Proven history of long term use in the most demanding rural and urban applications.
- ✓ Come with quality Watermarked Fittings as standard:
 - 90mm S/S Overflow Strainer
 - S/S Inlet Strainer available
 - Watermarked Brass Outlet
 - Watermarked Ball Valve

Clark Tanks is one of very few Australian tank manufacturers that are certified to both the Australian Tank Standards.



AS/NZS 4766:2006
Polyethylene Storage Tanks
for Water and Chemicals
Certification # 300/1



Independently Certified By

Fast Free Delivery*

*Limited area, access permitting.



Australian Operated & Built

Sizes shown are approximate sizes. Capacities listed are approximate maximum volumes. Prices quoted include GST. Specifications are subject to change. *Conditions apply. * Product Certification applies to selected range.

Off White

Merino Beige

Beige

Bush Grey

Sandcove

Gully Brown

Clay Brown

Bronze Olive

Dark Green

Mangrove Green

Rivergum

Mist Green

Smooth Cream

NP220 | 1,000 Litre

Apex Height: 1540mm



Inlet Height: 1480mm

Diameter at Base: 1000mm

Price:

CT440 | 2,000 Litre

Apex Height: 2000mm



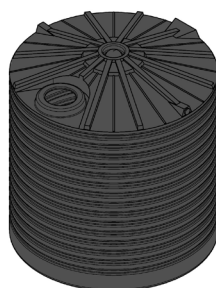
Inlet Height: 2000mm

Diameter at Base: 1200mm

Price:

CT2000 | 9,092 Litre

Apex Height: 2390mm



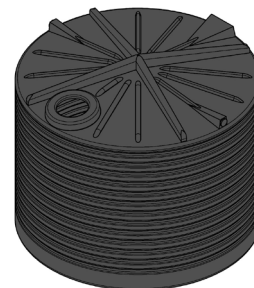
Inlet Height: 2250mm

Diameter at Base: 2340mm

Price:

CT2200 | 10,000 Litre

Apex Height: 2100mm



Inlet Height: 2020mm

Diameter at Base: 2630mm

Price:

CT7000 | 31,822 Litre

Apex Height: 2850mm



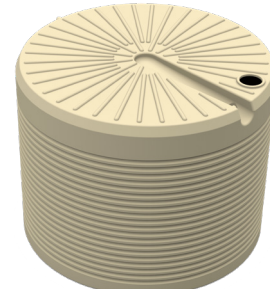
Inlet Height: 2560mm

Diameter at Base: 4159mm

Price:

CT11000 | 50,050 Litre

Apex Height: 3390mm



Inlet Height: 3390mm

Diameter at Base: 4365mm

Price:



CT660 | 3,000 Litre

Apex Height: 2100mm



Inlet Height: 2100mm

Diameter at Base: 1440mm

Price:

CT1100 | 5,000 Litre

Apex Height: 2190mm



Inlet Height: 2100mm

Diameter at Base: 1820mm

Price:

CT1100SQ | 5,000 Litre

Apex Height: 1750mm



Inlet Height: 1660mm

Diameter at Base: 2100mm

Price:

CT3000 | 13,638 Litre

Apex Height: 2650mm



Inlet Height: 2400mm

Diameter at Base: 2860mm

Price:

CT5000 | 22,730 Litre

Apex Height: 2800mm



Inlet Height: 2450mm

Diameter at Base: 3650mm

Price:

CT5200SQ | 23,639 Litre

Apex Height: 2300mm



Inlet Height: 2000mm

Diameter at Base: 4150mm

Price:

Troughs

500 Litre Round



Diameter: 1,270mm
Height: 430mm

Price:

Slimline Tanks

SL2000 | 2,000 Litre

Height: 1685mm



Width: 680mm

Length: 2180mm

Price:

SL3000 | 3,000 Litre

Height: 1990mm



Width: 795mm

Length: 2570mm

Price:

SL5000 | 5,000 Litre

Height: 1960mm



Width: 1050mm

Length: 3330mm

Price:

PRJ55 Pressure Pump

Number of taps: 2-4



Max Flow Pressure: 60L/min

Price:

PRJ65 Pressure Pump

Number of taps: 4-6



Max Flow Pressure: 70L/min

Price:

PRJ80 Pressure Pump

Number of taps: 5-8



Max Flow Pressure: 78L/min

Price:

PRJ100 Pressure Pump

Number of taps: 7-12



Max Flow Pressure: 80L/min

Price:

VSRE67-120 Drive Pump with Pump Cover

Number of taps: 6-10



Max Flow Pressure: 120L/min

Price:

RainPro RM5096-7 Submersible Pump

WARRANTY ON
2
YEAR
WATERPRO PUMPS

Number of taps: 4-6



Rains to Mains Valve

Max Flow Pressure: 72L/min

Price:

WaterPro DJ58-2 Pressure Pump

WARRANTY ON
2
YEAR
WATERPRO PUMPS

Number of taps: 2-4



Max Flow Pressure: 55L/min

Price:

Floatless Rain to Mains Valve

Full flow 25mm/1" outlets



Price:

Included with all tanks

Price includes standard fittings - upgrade fees do apply



Watermarked
Brass Ball Valve

Available in



Watermarked
Brass Tank Fitting

1" 1.5" 2"



Inlet Strainer
400mm



Overflow Strainer
90mm