

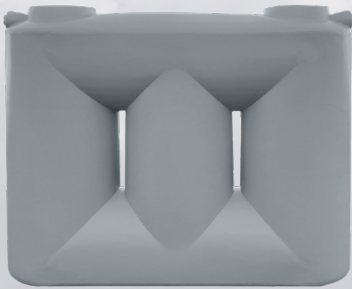
# CLARK TANKS

Better Design. Better Build. Better Value.

**Top  
Sellers**

see inside  
for details

SL3000 | 3,000 Litre



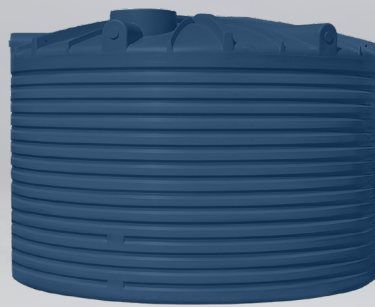
CT11000 | 50,050 Litre



CT1100 | 5,000 Litre



CT5500 | 25,000 Litre



Strong, affordable,  
heavy duty, premium,  
UV-protected  
**rainwater tanks**

- ✓ Aussie Made & Owned
- ✓ ISO certified, BASIX certified
- ✓ Certified to Australian Standards
- ✓ Quality Endorsed



**1800 252 758**

18304 Warrego Highway, Dalby QLD



[clarktanks.com.au](http://clarktanks.com.au)

# Benefits of a Clark Tank

- ✓ Manufactured from high quality food grade UV stabilised polyethylene (No BPA).
- ✓ Will not change the taste or quality of your water.
- ✓ Polyethylene tanks do not rust or corrode.
- ✓ Can be linked together for even greater storage capacity.
- ✓ Superior design with tapered walls (above 5,000 litre).
- ✓ Once piece construction, No vertical side seams (apart from our slimline range).
- ✓ Proven history of long term use in the most demanding rural and urban applications.
- ✓ Come with quality Watermarked Fittings as standard:
  - 90mm S/S Overflow Strainer
  - S/S Inlet Strainer available
  - Watermarked Brass Outlet
  - Watermarked Ball Valve

Clark Tanks is one of very few Australian tank manufacturers that are certified to both the Australian Tank Standards.



**AS/NZS ISO 9001:2008**  
Quality Management System  
Certification # 299/1



**AS/NZS 4766:2006**  
Polyethylene Storage Tanks  
for Water and Chemicals  
Certification # 300/1

Independently Certified By



## Fast Free Delivery\*

\*Limited area, access permitting.



### Australian Owned & Built

Sizes shown are approximate sizes. Capacities listed are approximate maximum volumes. Prices quoted include GST. Specifications are subject to change. \*Conditions apply. \* Product Certification applies to selected range.

White	Merino	Beige	Earthtone	Inlet Beige	Ravine	Autumn Brown	Bronze Olive	Heritage Green	Tidal Green	Rivergum	Mist Green	Smooth Cream
-------	--------	-------	-----------	-------------	--------	--------------	--------------	----------------	-------------	----------	------------	--------------

### CT225 | 1,000 Litre

Inlet Height: 1680mm

Apex Height: 1680mm



Tank Colour: RGM

Diameter at Base: 960mm

Price:

### CT440 | 2,000 Litre

Inlet Height: 1980mm

Apex Height: 1980mm



Tank Colour: MNO

Diameter at Base: 1200mm

Price:

### CT2000 | 9,092 Litre

Inlet Height: 2170mm

Apex Height: 2410mm



Tank Colour: SBE

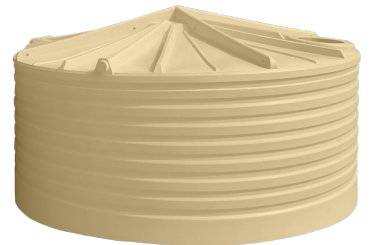
Diameter at Base: 2370mm

Price:

### CT2100SQ | 9,546 Litre

Inlet Height: 1330mm

Apex Height: 1580mm



Tank Colour: WHE

Diameter at Base: 3090mm

Price:

### CT5000DNR | 22,730 Litre

Inlet Height: 2480mm

Apex Height: 2900mm



Tank Colour: BGY

Diameter at Base: 3500mm

Price:

### CT5200SQ | 23,639 Litre

Inlet Height: 2000mm

Apex Height: 2150mm



Tank Colour: BST

Diameter at Base: 4100mm

Price:

### CT10000 | 46,817 Litre

Inlet Height: 3170mm

Apex Height: 3440mm



Tank Colour: MGN

Diameter at Base: 4630mm

Price:

### CT11000 | 50,050 Litre

Inlet Height: 3460mm

Apex Height: 3460mm



Tank Colour: BGE

Diameter at Base: 4400mm

Price:





# Pumps

### PRJ55E Pressure Pump

Number of taps: 2-4



Max Flow Pressure: 52L/min

Price:

### PRJ65E Pressure Pump

Number of taps: 4-6



Max Flow Pressure: 58L/min

Price:

### PRJ80E Pressure Pump

Number of taps: 5-8



Max Flow Pressure: 75L/min

Price:

### VSRE67-120 Drive Pump with Pump Cover

Number of taps: 6-10



Max Flow Pressure: 120L/min

Price:

## Fast Free Delivery within 600km of Dalby, QLD



## Included with all tanks



Watermarked  
Brass Ball Valve

Available in



Watermarked  
Brass Tank Fitting

1"

1.5"

2"



Inlet Strainer  
400mm



Overflow Strainer  
90mm

