

50000L Round

11000 GALLONS

SKU CT11000

| | NSW | QLD | VIC |
|-------------------|------|------|------|
| DIAMETER (mm) | 4400 | 4365 | 4365 |
| APEX HEIGHT (mm) | 3390 | 3390 | 3390 |
| INLET HEIGHT (mm) | 3390 | 3390 | 3390 |

Manufactured using Australian standard approved materials for long-lasting durability, strength, and safe water storage for your family.

(AS/NZS 4766 is the Australian/New Zealand standard for rotationally moulded polyethylene storage tanks designed for water and chemicals)

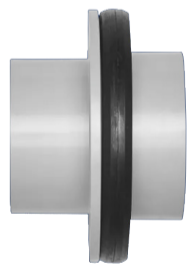
- ✓ Made from durable UV-stabilised polyethylene.
- ✓ Engineered for strength and long-term performance.
- ✓ Manufactured and tested to strict quality standards.
- ✓ Designed for safe and compliant installation.
- ✓ Quality fittings designed for reliable performance.



Standard Fittings

- Additional watermarked tested brass fittings or poly fittings are available on request (additional charges may apply)
- Available in 25mm, 40mm or 50mm. Poly welded fittings also available (additional charges will apply)

Overflow Flange & Gasket 90mm



Leaf Catcha Rectangular 90mm



Delivery Included direct to your site or home



Refer to our Delivery & Installation Guide for further information.

Tank Flange Watermarked Brass 50mm x 40mm Lead Free



Ball Valve Watermarked Brass Lever Handle FI x FI 50mm Lead Free



Tank Screen 400mm



Mozzie Stopper 90mm



* Warranty conditions available on our website.

Sizes shown are approximate sizes. Capacities listed are approximate maximum volumes. Prices quoted include GST. Specifications are subject to change. Product Certification applies to selected range.

